

Exhibit D



FINAL REPORT SUMMARY

PERFORMANCE AND VALUE ANALYSIS

UTILIS SATELLITE LEAK DETECTION SERVICES

Kevin Weeks

San Diego, CA.

September 25th, 2020

WELCOME



Kevin Weeks
Customer Success Manager



Gadi Kovarsky
Director of National Accounts

AGENDA

- Project Overview
- Project Schedule
- Final Report Summary
- Next Steps

AGENDA

- Project Overview
- Project Schedule
- Final Report Summary
- Next Steps

PROJECT OVERVIEW

Objective

- **Enable:** Reduction in real water loss
- **Goal:** Evaluate benefits of a Utilis-directed leak detection program for League City & Subsidence constituents

Challenge

- Traditional proactive leak detection provides limited real loss reduction
- Manpower and time intensive
- Limited coverage for full system
- Difficult finding background (underground) leaks contributing to real NRW

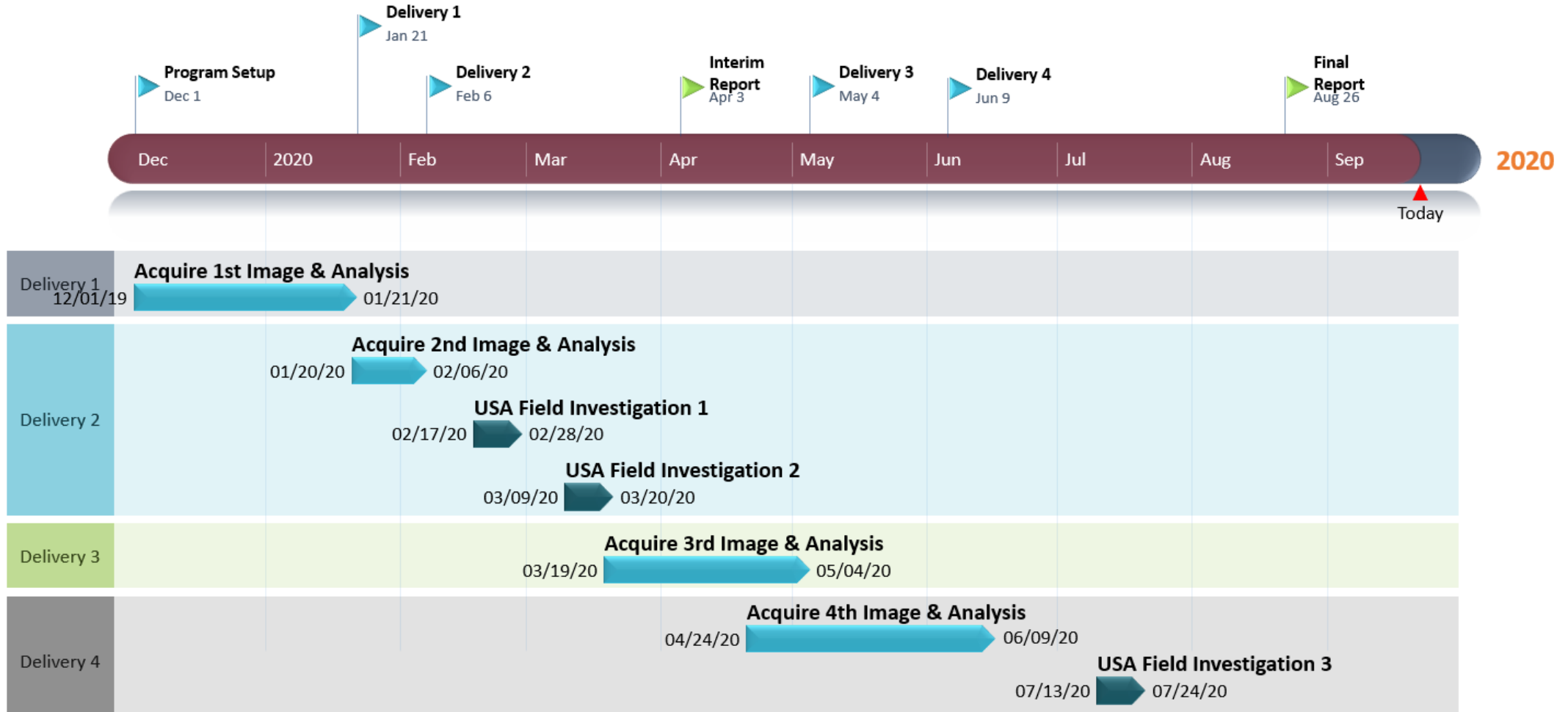
Outcome

- Adopting satellite guided data layer provides higher efficiencies for leak detection.
- Implement Utilis service for continued real water loss reduction greater than project goal.
 - Bottoms-up analysis: track water savings from leaks found and repaired through Utilis program
 - Top-down analysis: League City, city- wide water audit to compare one year before and one year after

AGENDA

- Project Overview
- Project Schedule
- Final Report Summary
- Next Steps

PROJECT SCHEDULE



AGENDA

- Project Overview
- Project Schedule
- Final Report Summary
- Next Steps

HIGHLIGHTS: FINAL SUMMARY OF FINDINGS

- Total of **30 days** boots on the ground
- **92,600 GPD** real water loss recovery
- **Each crew day** spent investigating leaks **recovered 1.1MGY** water loss
- Cost of recovered water supply **\$6.00 per 1000 gallons**
- **93% leaks** were **non-surfacing**
- Approximately **42% POIs** have been inspected
- Value of **water loss savings \$66,900** per year
- Opportunity to develop internal leak detection crew and recover further water losses

LEAGUE CITY – CURRENT CONDITION

League City Conditions (2018)

| | |
|--|--------------------|
| Distribution System Pipelines (miles) | 516 |
| Number of Water Service Connections | 34,092 |
| Average System Delivery (MGD) | 11.7 |
| Non-Revenue Water (MGD) | 1.16 |
| Non-Revenue Water (%) | 9.9 % |
| Real Losses | 1.02 MGD (8.7%) |
| Cost of Water Production (\$/1000 gal) | \$1.98 |
| Retail Price of Water (\$/1000 gal) | \$5.50 |

**TWDB Water Audit: Calendar Year 2018 (Table 1)*

Key Insights & Takeaways

- League City does not produce its own water supply.
- Non-revenue water (NRW) loss is estimated to be 1.16 MGD or 9.9%% of system delivery.
- 1.02 MGD are real water losses.

LEAGUE CITY – UTILIS RESULTS

| UTILIS RESULTS – League City | | | | | |
|------------------------------|-------|----------|----------|-------|-----------|
| | LEAKS | CREWDAYS | LEAK/DAY | MILES | LEAK/MILE |
| TOTAL | 47 | 30 | 1.6 | 48.7 | 1 |

(Table 2)

Key Takeaways & Insights:

- Identified 47 leaks from all POIs investigated
- 1.6 Leaks per day, beating traditional BOTG
- 48.7 miles investigated to yield 92,600GPD savings

| UTILIS RESULTS – POI > 1 LEAK | | | |
|-------------------------------|-------|--------------|------------|
| | LEAKS | POI > 1 LEAK | % > 1 LEAK |
| TOTAL | 47 | 4 | 8.5% |

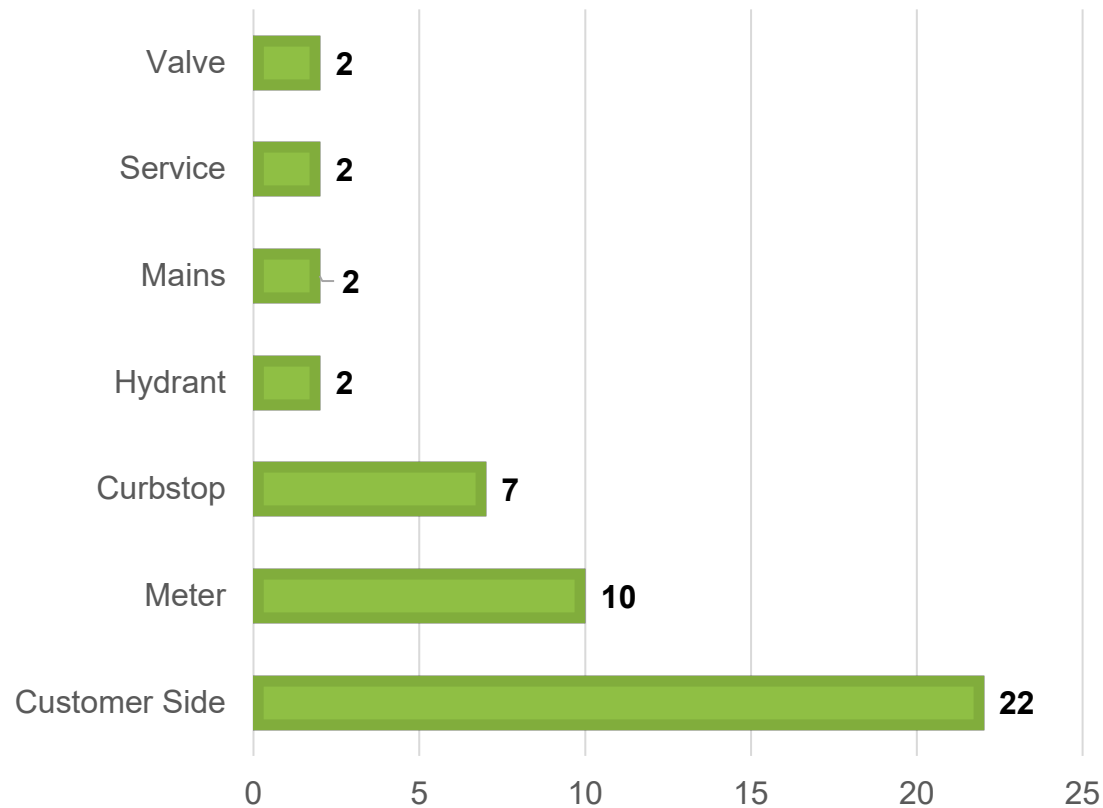
(Table 3)

Key Takeaways & Insights:

- Some true positive POIs exhibited more than one leak per site.
- 9.76% of the POIs where leaks were found had more than one leak.

LEAGUE CITY – UTILIS RESULTS

LEAK LOCATION



Source: League City – Utilis – Final Briefing Paper_August2020

Key Insights & Takeaways

- 25 utility side leaks within the confines of this study
- 23 were hidden, or, had not surfaced and would not have been identified if not for a physical inspection of the specific area.
- For purposes of ROI and value proposition, customer side leaks have been removed from analysis.

UTILIS PROJECT COMPARISON

Hilton Head, SC Comparison

PVC Project Comparison

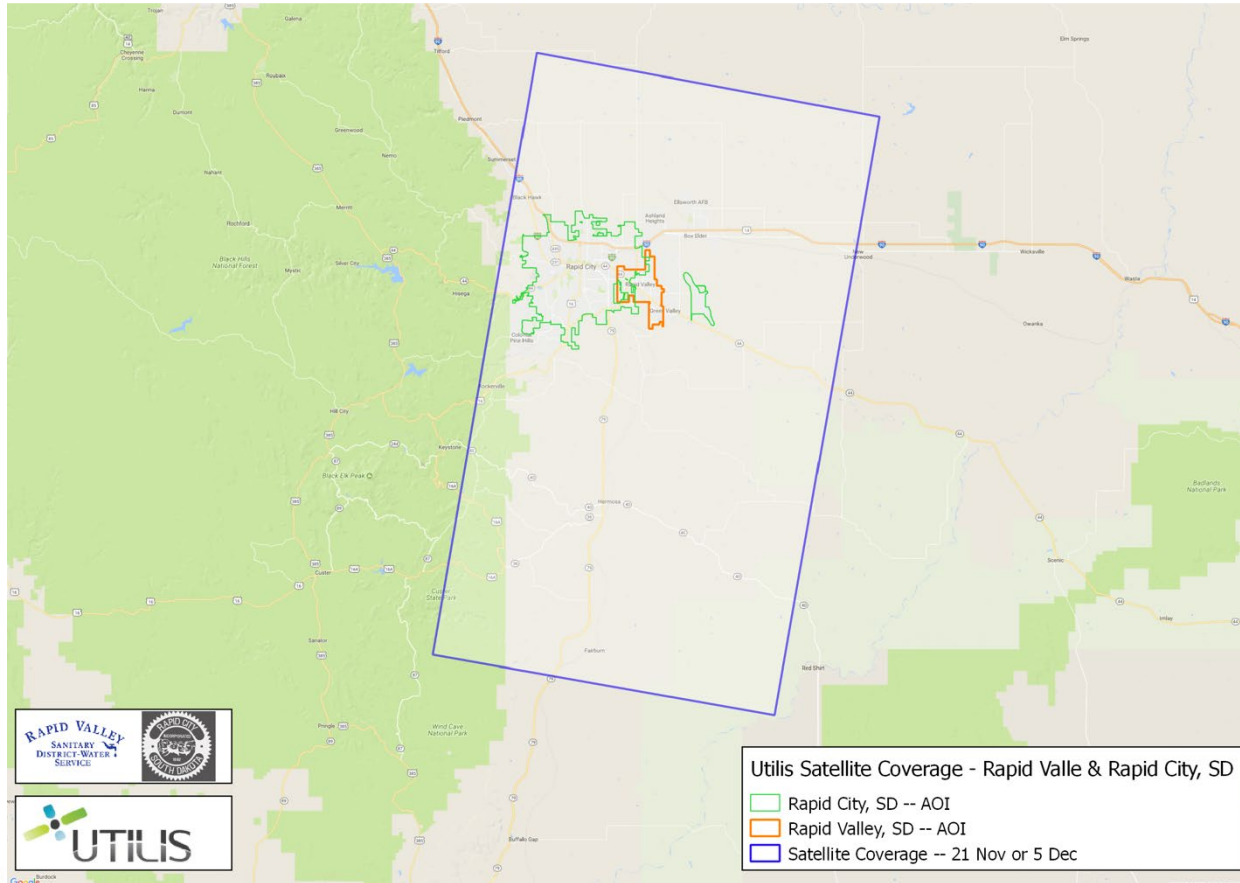
| PVC project Comparison | | |
|--------------------------|------------------------------|-------------------------------------|
| | Traditional BOTG (Leaks/day) | Utilis satellite guided (Leaks/day) |
| Hilton Head (PVC system) | 0.8 | 1.9 |
| League City (PVC system) | N/A | 1.6 |
| Avg mixed U.S. system | 1.3 | 3.8 |

(Table 5)

Key Insights & Takeaways:

- Continue to investigate remaining POIs
- Analyze multiple deliveries for reoccurring POIs
- Experienced leak detection crew important with PVC systems

RAPID VALLEY & RAPID CITY



- 2 deliveries over a 2-year span
- Rural conditions with long distances between listening points
- Covered entire system vs. traditional methodology
- Utilized pressure location to find leaks

LEAGUE CITY– UTILIS RESULTS

Cost Benefit Analysis

League City Leak Flow Rate

| LEAGUE CITY LEAK FLOW RATE | | | |
|----------------------------|-----------------|----------------|-------------------|
| LEAK TYPE | NUMBER OF LEAKS | AWWA M36 (gpm) | Total Flow (gpm) |
| Main | 2 | 10.4 | 20.8 |
| Service | 2 | 6.9 | 13.8 |
| Valve | 2 | 6.9 | 13.8 |
| Meter | 10 | 0.4 | 4.0 |
| Hydrant | 2 | 3.5 | 7.0 |
| Curb stop | 7 | 0.7 | 4.9 |
| Total | 25 | | 64.3 (92,600 GPD) |

(Table 7)

- Using data gathered by AWWA M36 report, Utilis has estimated gpm loss with leaks that have been found in the survey.

LEAGUE CITY– UTILIS RESULTS

Cost Benefit Analysis

League City Value Proposition

| LEAGUE CITY VALUE PROPOSITION | |
|-------------------------------|----------|
| Cost of Service | \$155,00 |
| Cost of Field Inspection | \$48,000 |
| Leak Flow Rate (gpm) | 64.3 |
| Value Proposition (\$/day) | \$183 |
| Leak Flow Rate (GPD) | 92,600 |
| Value Proposition (\$/year) | \$66,900 |

(Table 8)

- League City cost of water production has been reported to be \$1.98 per 1000 gallons.
- Value proposition accounting for leaks is \$66,900 per year

UTILIS FOR CONDITION ASSESSMENT

POI – Heat Map from all four deliveries:

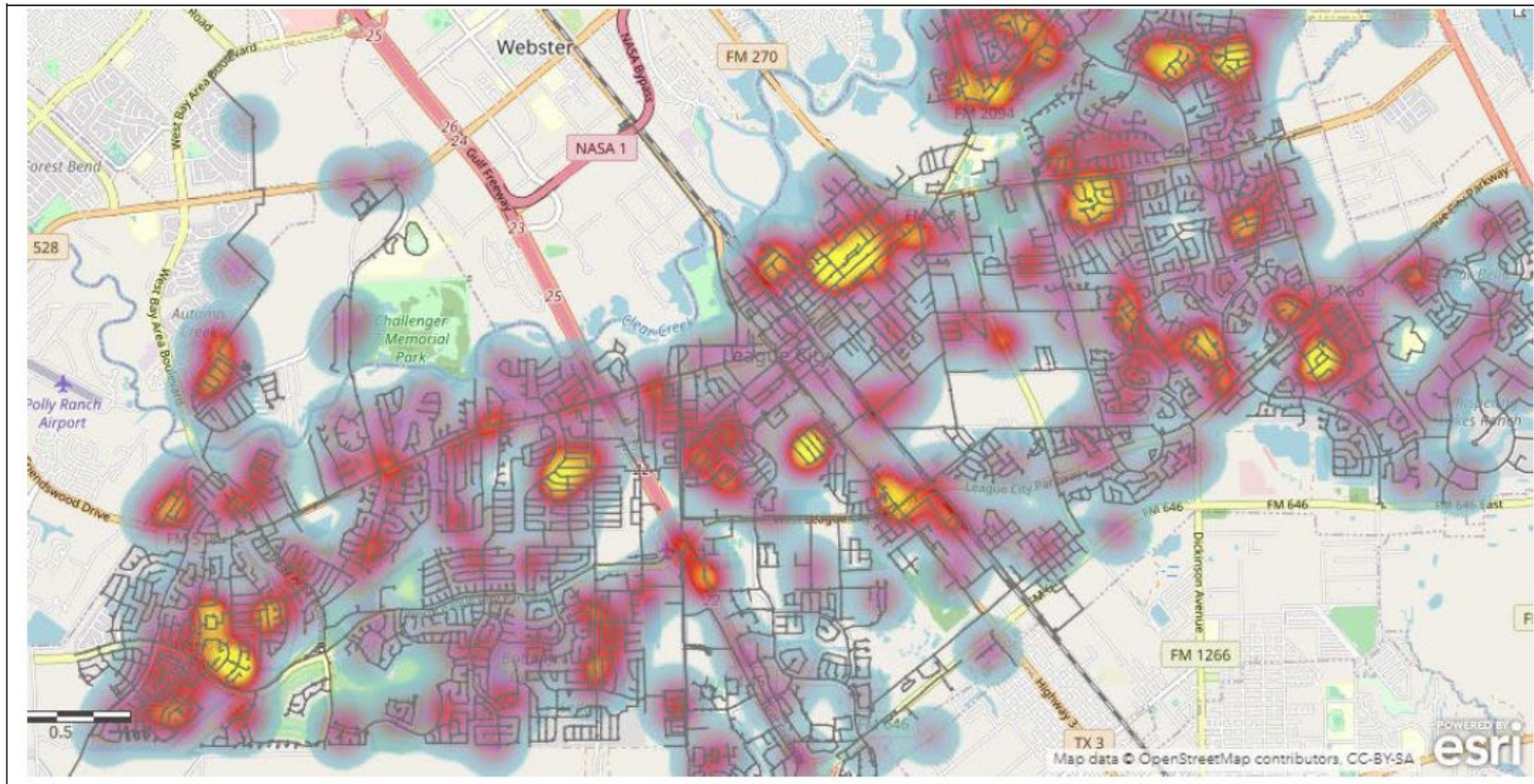


Figure 1

Key Benefits:

- Utilize Utilis' cluster analysis to identify areas for focus
- Triage the system for condition assessment
- Prioritize system repair and maintenance
- Limited BOTG involvement

AGENDA

- Project Overview
- Project Schedule
- Final Report Summary
- Next Steps

NEXT STEPS

- Internal team development for remaining POI investigation
- Utilize Utilis for Condition Assessment/Internal team guidance
- Present findings to League City Constituents



Thank you!

Get more information at www.utiliscorp.com

