

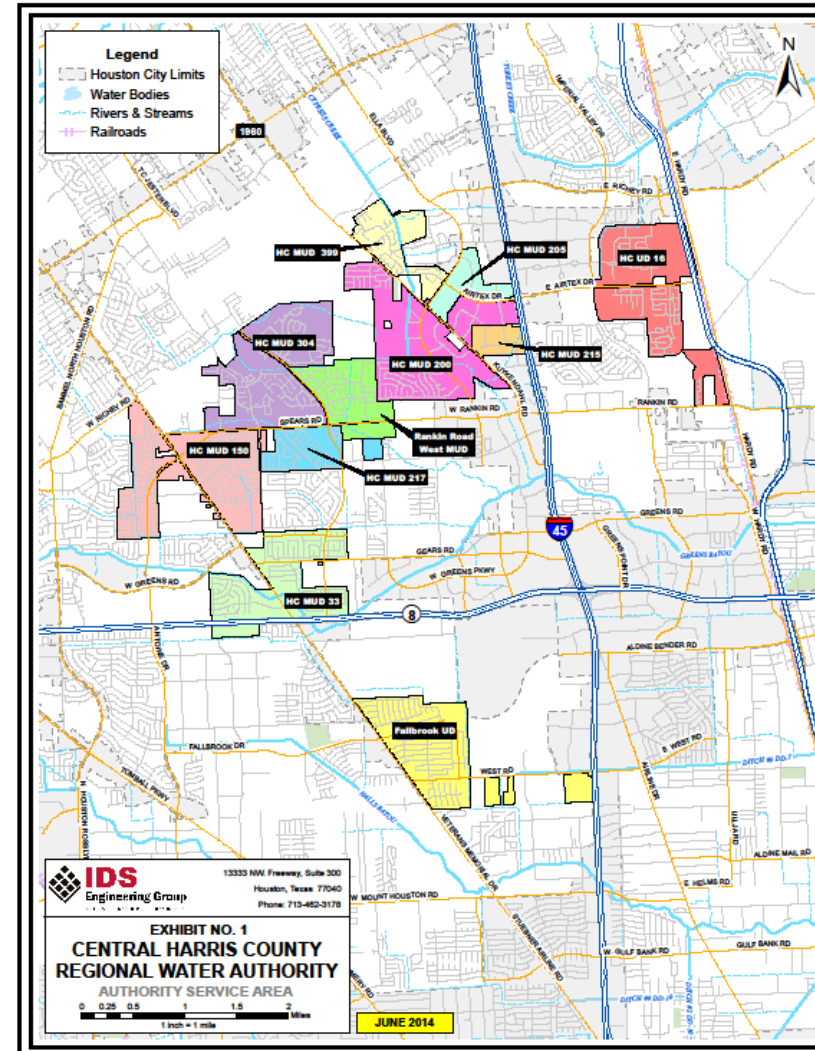


Central Harris County Regional Water Authority Groundwater Reduction Plan Update



Central Harris County Regional Water Authority

- HB 3181 - 2005
- 11 member districts
 - City of Houston
 - NHCRWA
- Water Supply Contracts
- Amended GRP – 2014
- Current Water Rates
 - GW - \$4.08/1000
 - SW - \$4.42/1000





GRP Implementation

- Groundwater Reduction Plan
 - 30% Reduction by 2010 (met).
 - 60% Reduction by 2025
 - 80% Reduction by 2035
- Initial 2.12 MGD Surface Water Capacity
- Current 7.0 MGD Surface Water Capacity

Table No. 2
Total Water Projections

		2025	2035
	2013 ADF	Projected ADF	Projected ADF
	(mgd)	(mgd)	(mgd)
1	HC MUD 33	0.6446	0.8590
2	HC MUD 150	0.7689	1.3580
3	HC MUD 217	0.1845	0.2990
4	HC MUD 304	0.5097	0.9000
5	FALLBROOK UD	0.7093	1.0000
6	HC MUD 200 ^{1,2}	0.9266	1.2000
7	HC MUD 205 ¹	0.1293	0.1754
8	HC MUD 215	0.1833	0.1700
9	RANKIN RD WEST MUD	0.1241	0.5340
10	HC UD 16	0.1575	0.7377
11	HC MUD 399 ²	0.2804	0.4473
	Total ADF (MGD)	4.6182	7.8804
	Annual Total (MG)	1685.652153	2803.346

Estimated SW 60% 80%

4.6082 6.3043

2018 Update
2025 2035

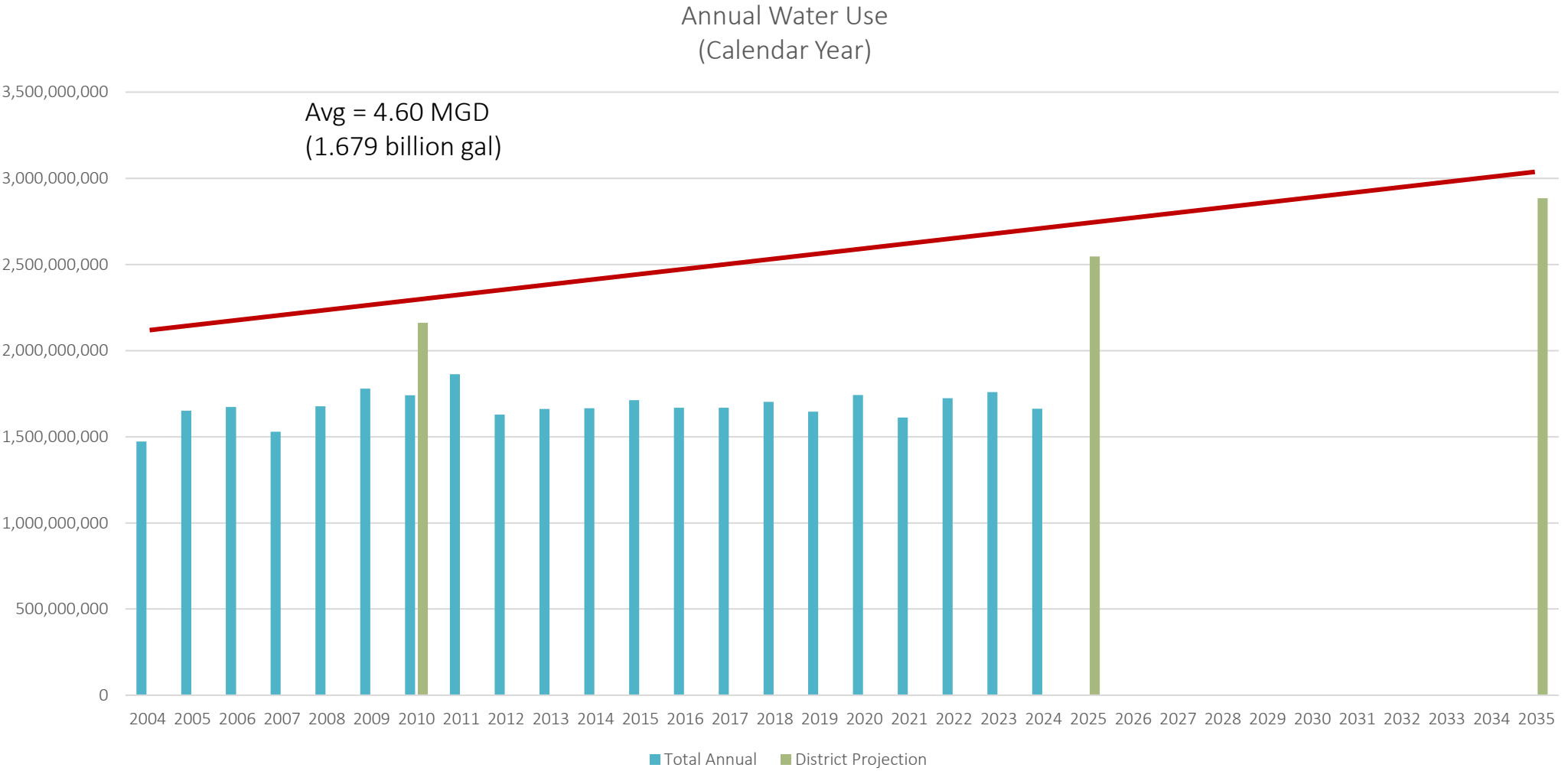
	2017 ADF	Projected ADF	Projected ADF
	(mgd)	(mgd)	(mgd)
	0.5512	0.8590	0.8590
	0.7592	0.9328	1.0718
	0.1881	0.2990	0.2990
	0.5527	0.9000	0.9000
	0.5713	0.7500	1.3000
	0.9987	1.2000	1.4000
	0.1492	0.3020	0.3020
	0.1553	0.1600	0.2000
	0.1611	0.5340	0.5340
	0.1534	0.7377	0.7377
	0.3635	0.3000	0.3000
	4.6036	6.9745	7.9035
	1680.316843	2545.687025	2884.779325

60% 80%

4.1847 6.3228



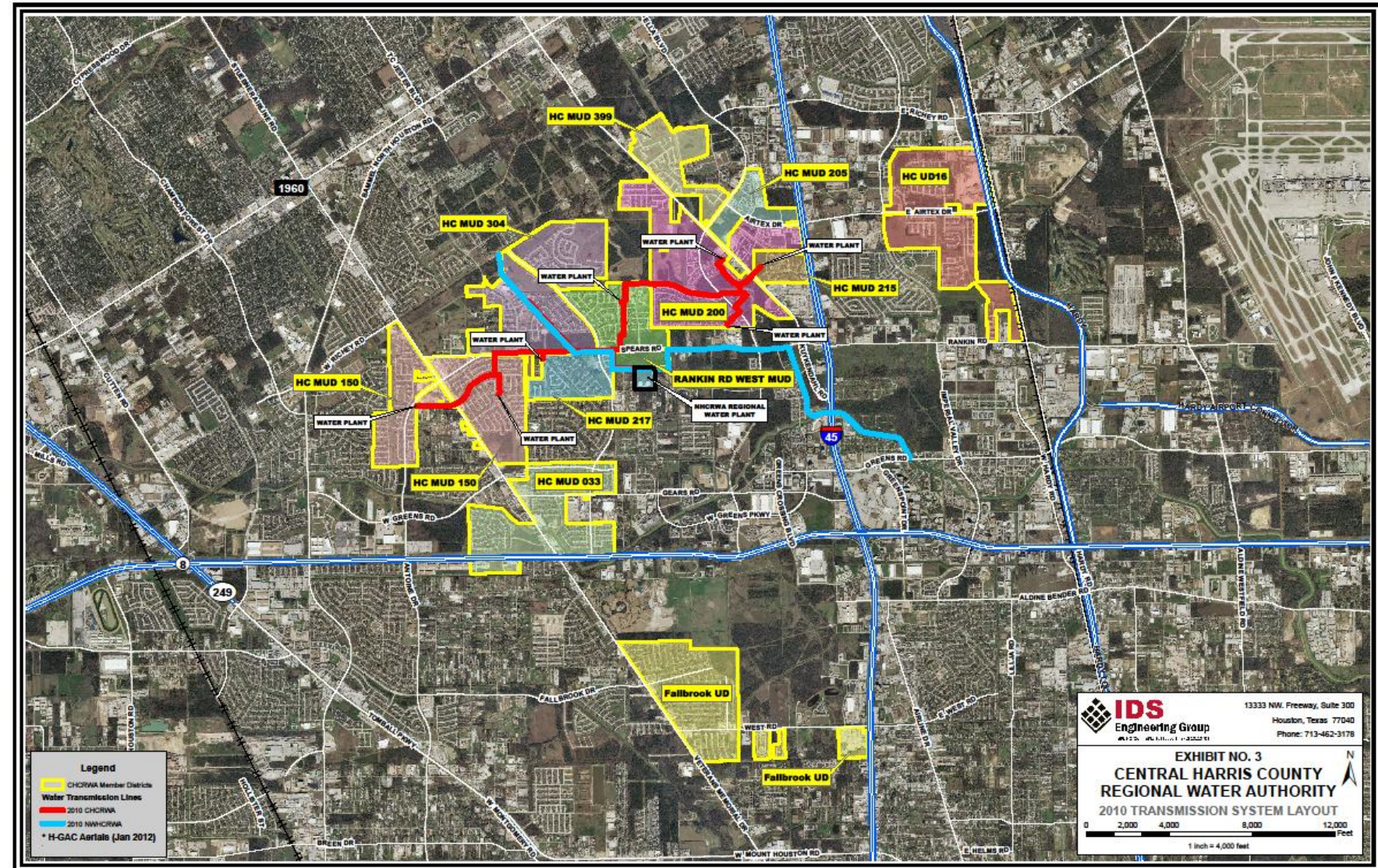
Total Historic Annual Water Use



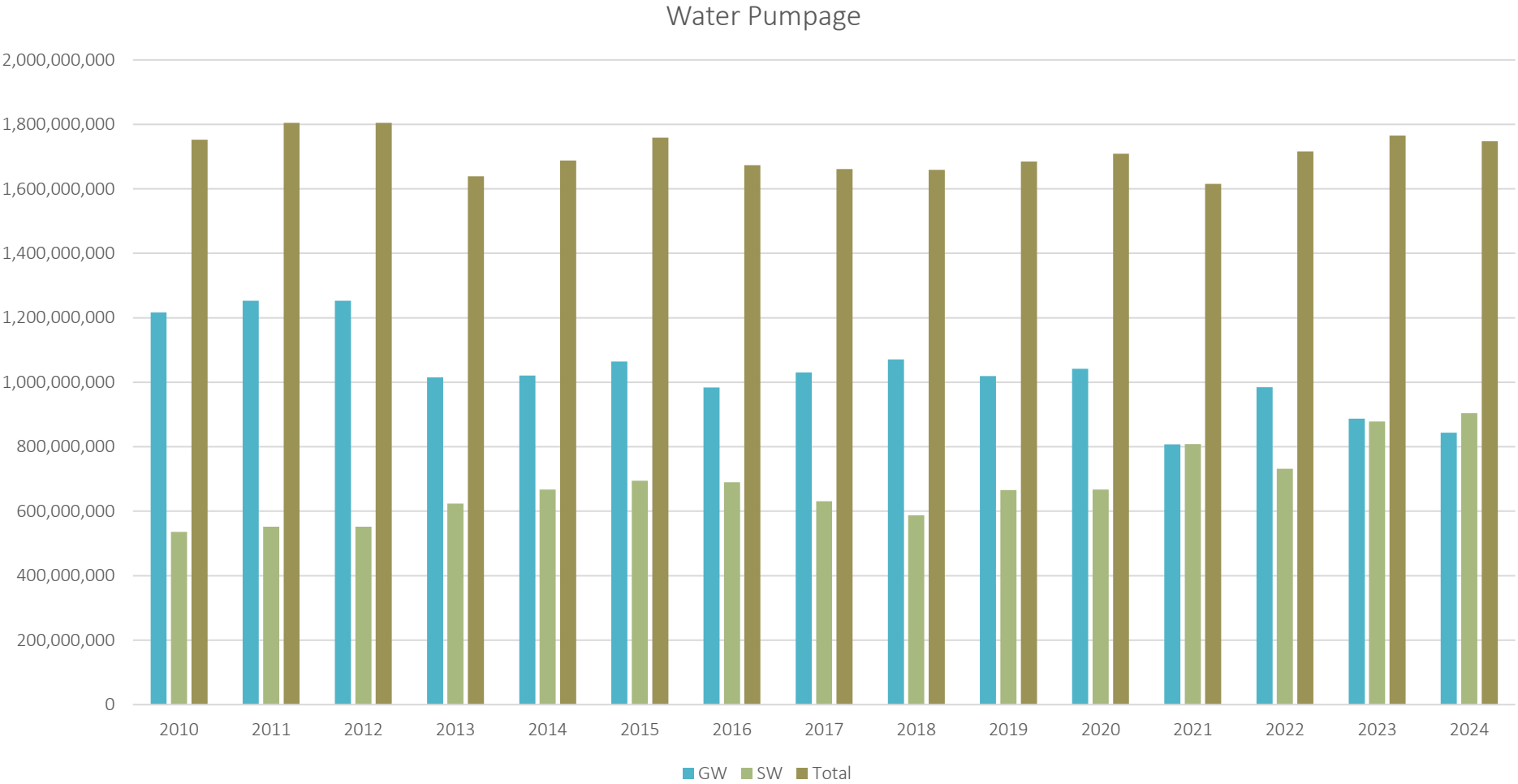
2010 Surface Water Supply System

2010 CHCRWA System

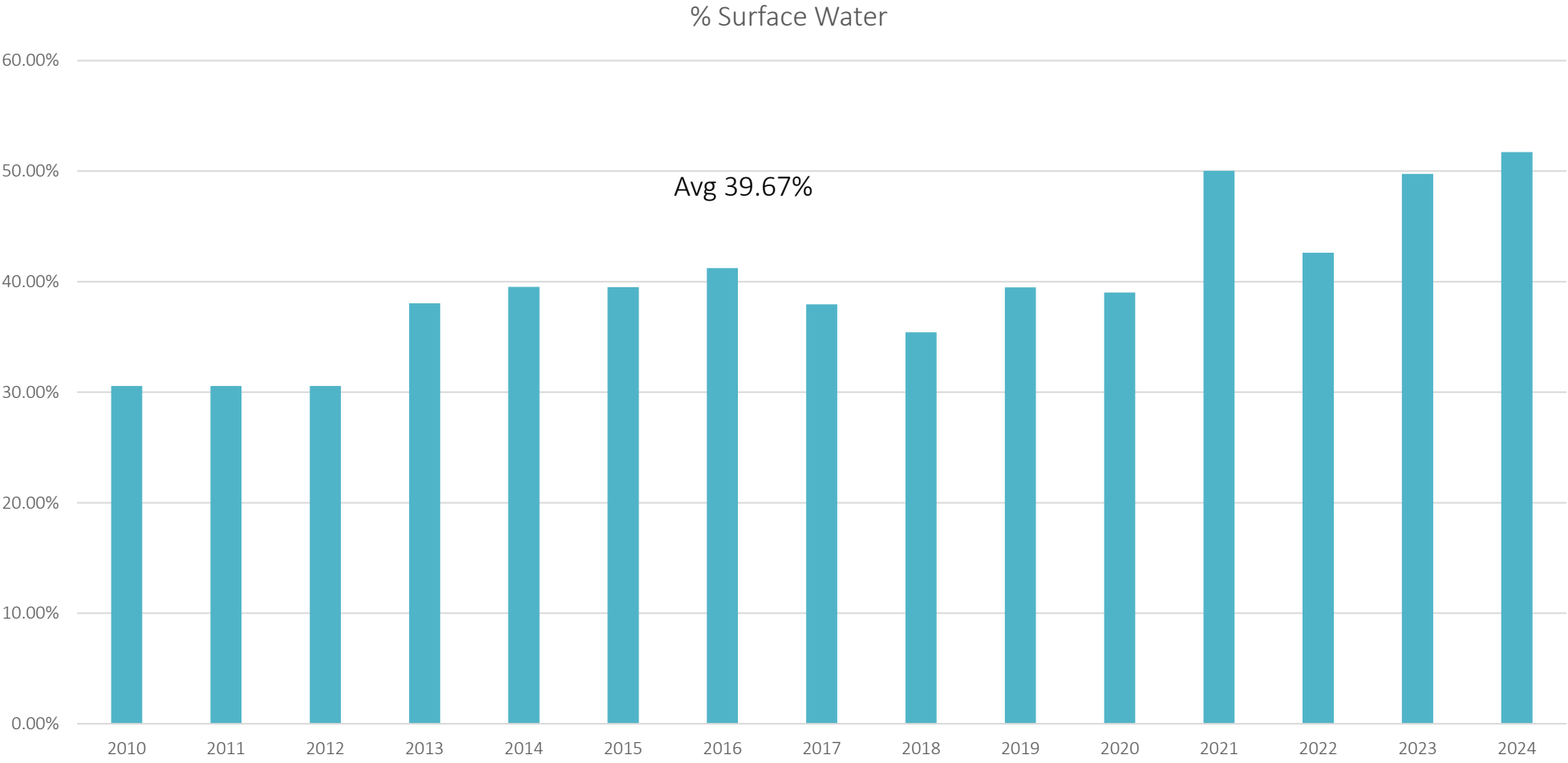
- 2.12 MGD Surface Water
- Deliver to:
 - MUD 150
 - MUD 200*
 - MUD 217
 - RRW MUD
 - MUD 304 (2021)
- Capacity share in existing NEWPP, 66-inch and 54-inch transmission lines, and NHCRA pump station
- Approx. 5.2-miles of distribution lines
- Approx. Cost \$22 million



Annual Permit Year Water Pumpage



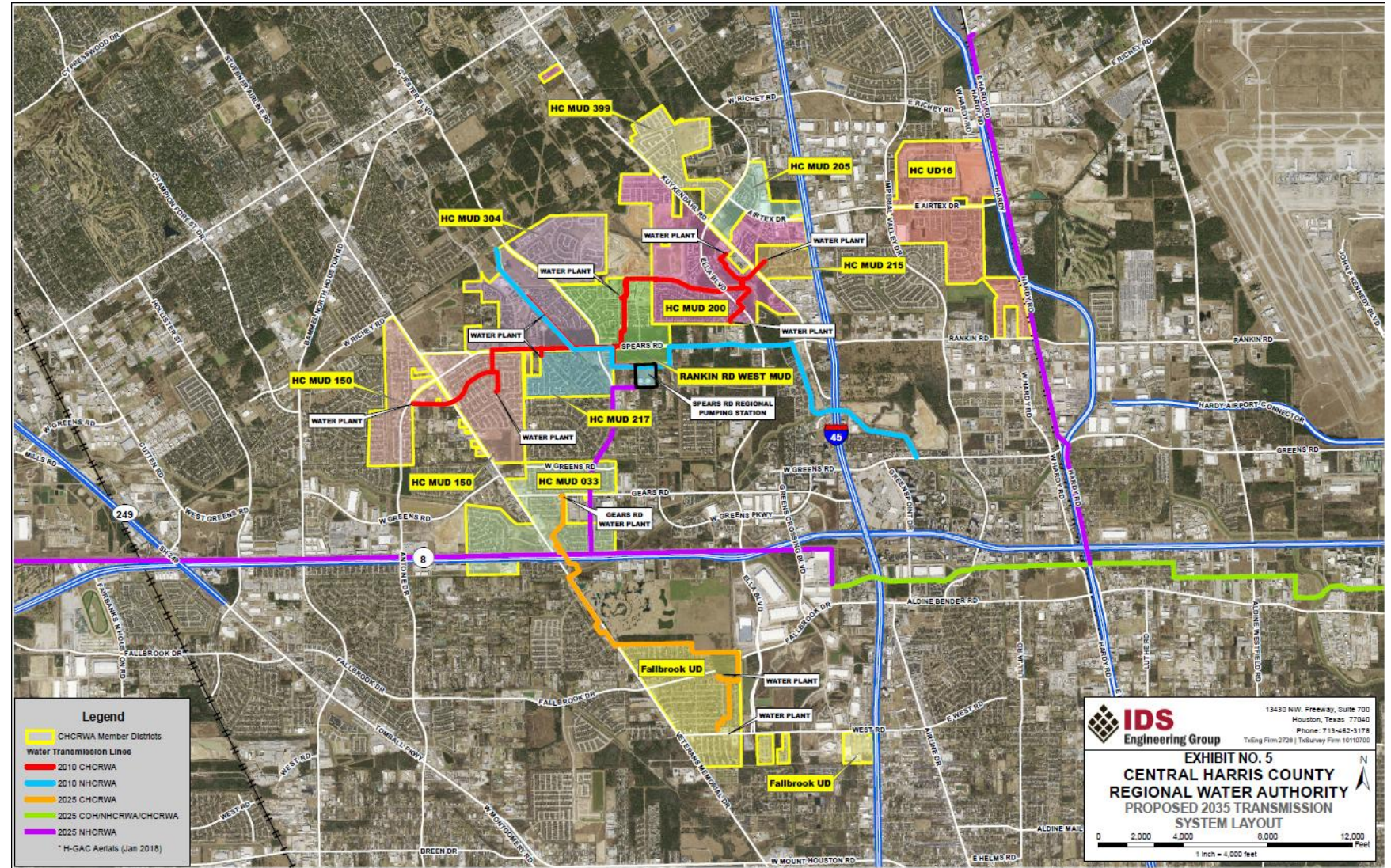
Annual Permit Year % Surface Water



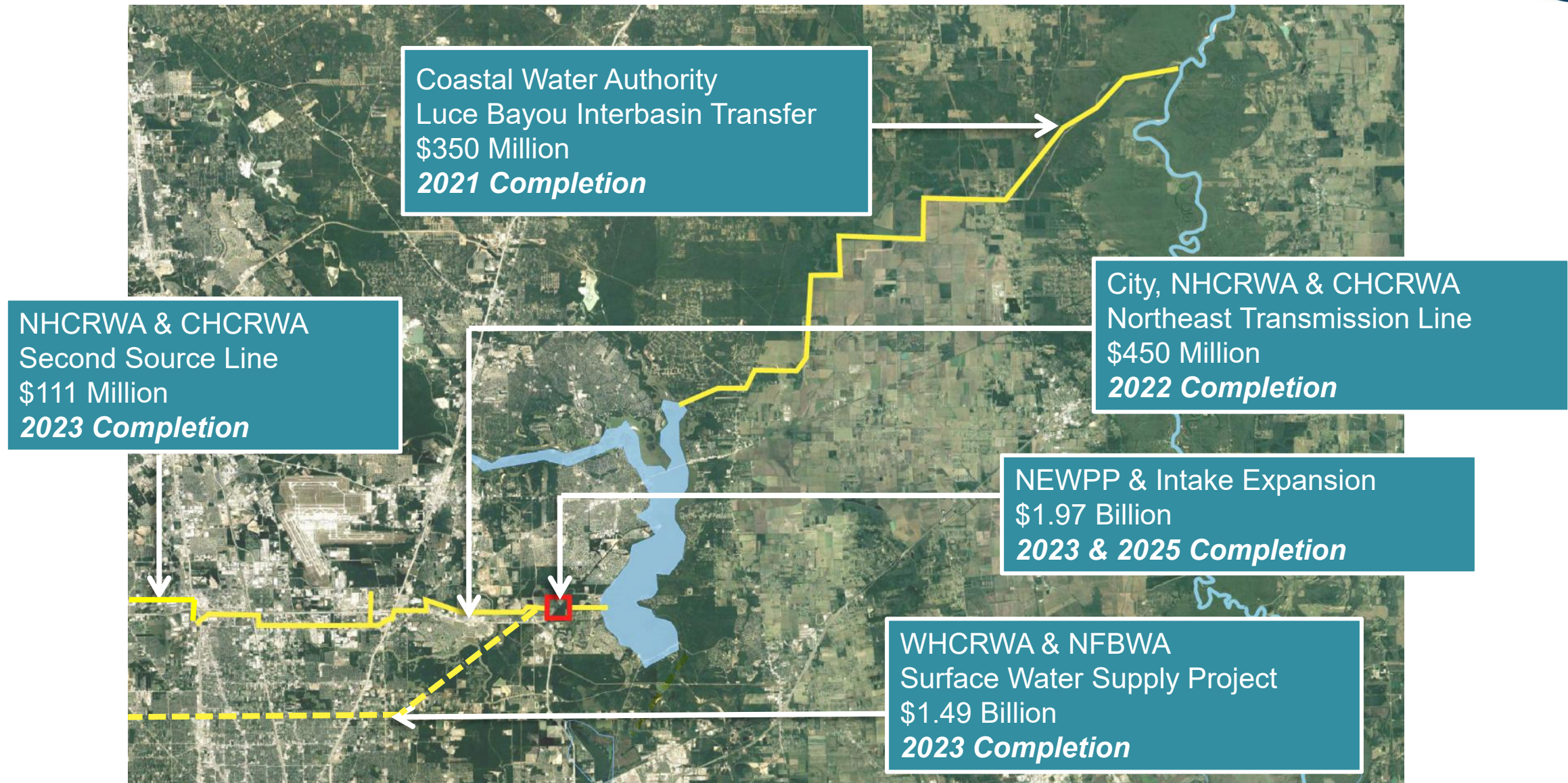
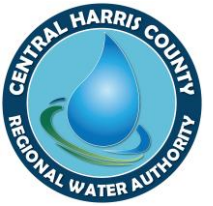
2025 Surface Water Supply System

2025 CHCRWA System

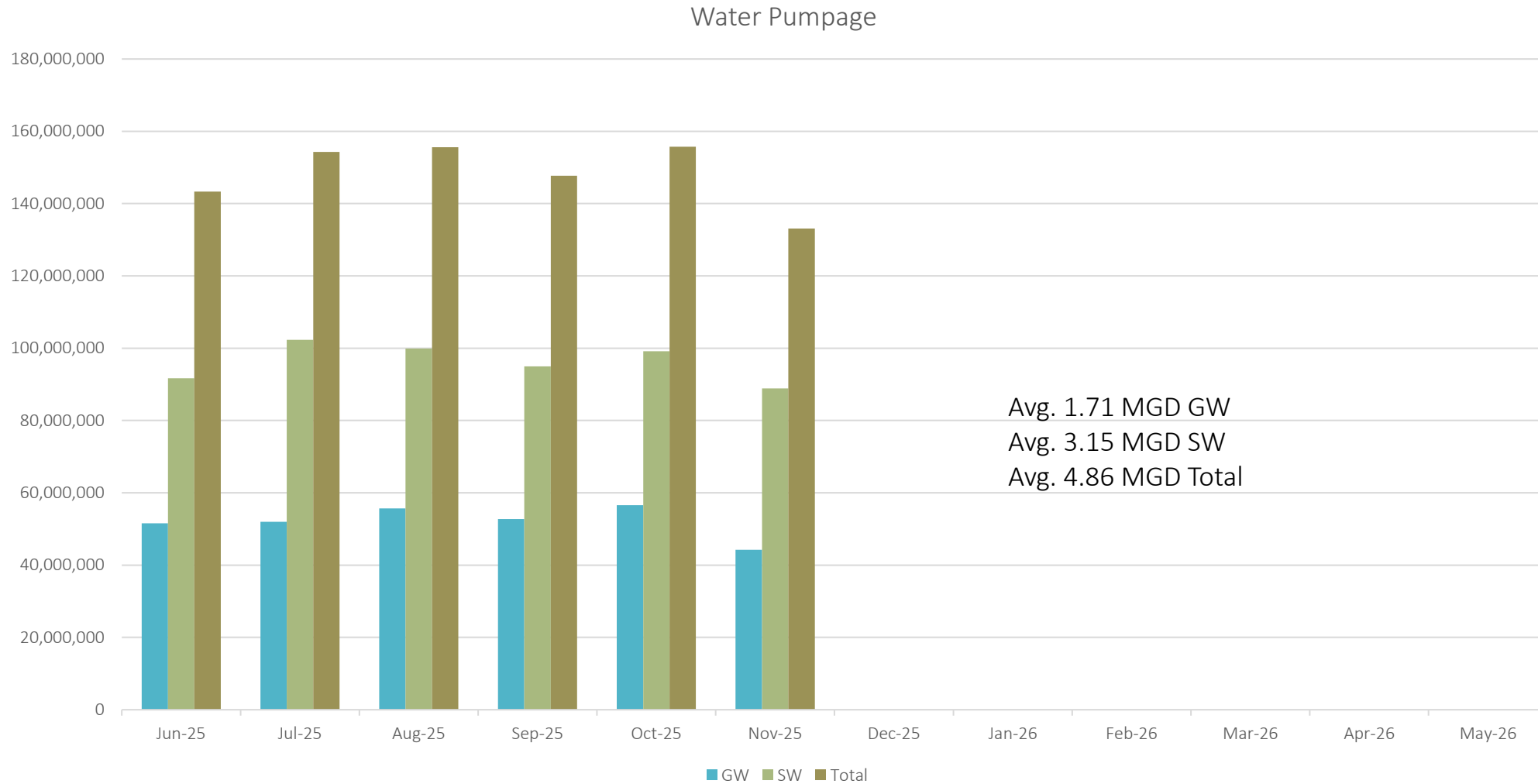
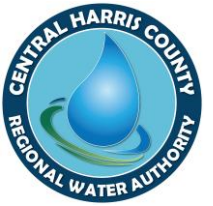
- 4.88 MGD Surface Water
- Add Delivery to
 - MUD 33
 - Fallbrook MUD
- Capacity share in NEWPP expansion, Luce Bayou, 108-inch and 84-inch transmission lines
- Approx. 3.6-miles of distribution lines
- Est. Cost \$84.1 million



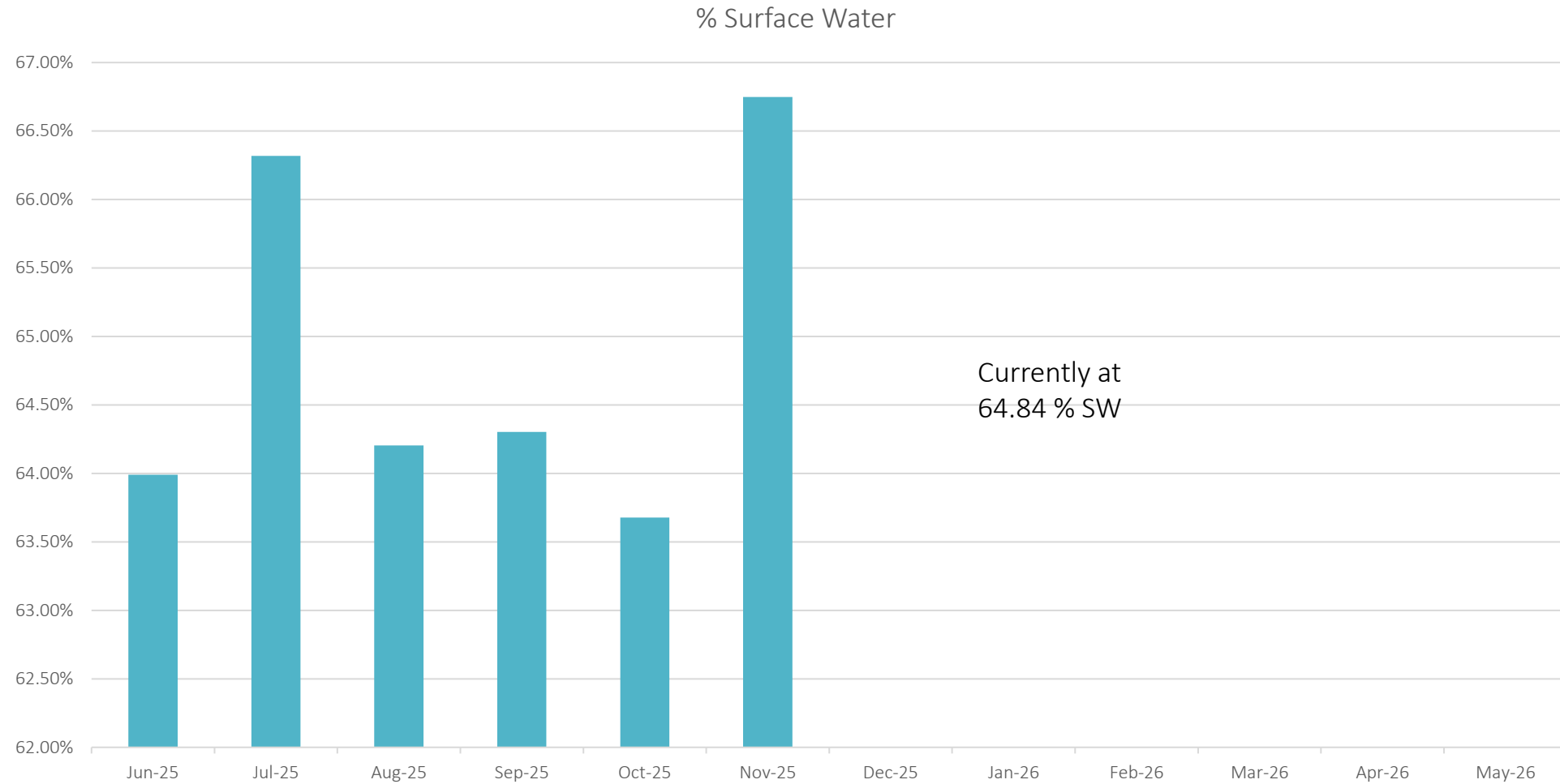
2025 Conversion Regional Projects



2025 Permit Year Water Pumpage



2025 Permit Year % Surface Water





Questions?